

Key Terms

Acute illness	Functional nursing	Licensed vocational nurse (LVN)	Primary nursing
Assisted living residence	Health team	Nursing assistant	Registered nurse (RN)
Case management	Hospice	Nursing team	Team nursing
Chronic illness	Licensed practical nurse (LPN)	Patient-focused care	Terminal illness

Fill in the Blanks: Key Terms

- _____ is a nursing care pattern where the RN is responsible for the person's total care.
- A person who performs delegated nursing tasks under the supervision of an RN or LPN/LVN is a _____.
- When an illness or injury has no reasonable expectation of recovery, it is a _____ illness.
- A nurse who has completed a 1-year nursing program and has passed a licensing test is a _____ (LPN).
- The _____ are those who provide nursing care—RNs, LPNs/LVNs, and nursing assistants.
- A sudden illness from which the person is expected to recover is an _____.
- When a nursing care pattern focuses on tasks and jobs, and each nursing team member has certain tasks and jobs to do, it is called _____.
- An _____ provides housing, personal support services, health care, and social activities in a homelike setting.
- When an illness or injury is ongoing, is slow or gradual in onset, and has no known cure, it is a _____ illness.
- _____ is a health care agency or program for persons who are dying.
- LPNs are sometimes called _____.
- _____ is a nursing care pattern in which a case manager (an RN) coordinates a person's care from admission through discharge and into the home setting.
- A _____ is a nurse who has completed a 2-, 3-, or 4-year nursing program and has passed a licensing test.
- The many health care workers whose skills and knowledge focus on the person's total care are called the _____.

- _____ is a nursing care pattern in which a team of nursing staff is led by an RN who decides the amount and kind of care each person needs.
- When services are moved from departments to the bedside, this is a nursing care pattern called _____.

Circle the BEST Answer

- When health care agencies offer services, the focus of care is always
 - To cure illness
 - To give daily personal care
 - The person
 - To provide care after surgery or injury
- Health promotion includes
 - Immunizations against infectious diseases
 - Respiratory, physical, and occupational therapies
 - Learning skills needed to live, work, and enjoy life
 - Receiving teaching and counseling about healthy living
- Diagnostic tests, physical exams, surgery, emergency care, and drugs are used in
 - Health promotion
 - Detection and treatment of disease
 - Rehabilitation and restorative care
 - Disease prevention
- The goal of rehabilitation and restorative care is
 - To teach the person about healthy living
 - To return persons to their highest possible level of physical and psychological functioning
 - To return the person completely to normal functioning
 - To treat the illness with diet, exercise, and medications
- A person with an acute illness will probably be treated in
 - A hospital
 - A long-term care center
 - An assisted living facility
 - A rehabilitation agency
- An example of a care need that may be given in a subacute care agency is
 - Minor surgery
 - Rehabilitation for heart disorders
 - Help with personal care and drugs
 - Care for a person who is dying

- 23 Persons in a long-term care center
 A Need hospital care
 B Are acutely ill
 C Are usually older and have chronic diseases
 D Never are able to return home
- 24 Skilled nursing facilities
 A Provide nursing care needed until death
 B Are for persons with health problems that require more complex hospital care
 C Provide care in the person's home
 D Provide outpatient care
- 25 A person may have an apartment and receive help with personal care when living in
 A A long-term care center
 B An assisted living facility
 C A rehabilitation care agency
 D A skilled nursing facility
- 26 Persons who have problems dealing with life events may be treated in a
 A Mental health center
 B Skilled care facility
 C Long-term care center
 D Hospice
- 27 Home care agencies provide
 A Health teaching and supervision
 B Bedside nursing care
 C Physical therapy, rehabilitation, and food services
 D All of the above
- 28 Hospices
 A Provide short term care until the person recovers
 B Give care only in the home
 C Provide care to persons who no longer respond to treatments aimed at cures
 D Only provide care to meet the person's physical needs
- 29 Health care systems are
 A Agencies that join together as one provider of care
 B Members of the health team that give bedside care
 C Members of the health team that work in a hospital
 D The hospitals in a community
- 30 All of these are members of the health team except
 A Occupational therapist
 B Housekeeper
 C Social worker
 D Cleric
- 31 The person responsible for nursing service is
 A A medical doctor
 B An RN with a bachelor's or master's degree
 C A person with many years experience in giving nursing care
 D The board of trustees
- 32 Nursing education staff may teach all of these *except*
 A Basic nursing skills needed to begin employment
 B Instruction on the use of new equipment
 C New employee orientation programs
 D New and changing information for the nursing team
- 33 A registered nurse who completes a university program will be in school for
 A 2 years
 B 1 year
 C 3 years
 D 4 years
- 34 An RN
 A Assesses, makes nursing diagnoses, plans, implements, and evaluates nursing care
 B Is supervised by licensed doctors, and licensed dentists
 C Only gives care when the person's condition is stable and care is simple
 D Always is able to diagnose diseases or illnesses
- 35 An LPN/LVN
 A Must pass a licensing test to work
 B Assists RNs in caring for acutely ill persons and with complex procedures
 C Has fewer responsibilities and functions than RNs
 D All of the above
- 36 When a team leader delegates the care of certain persons to other nurses, the nursing care pattern is called
 A Patient-focused care
 B Team nursing
 C Functional nursing
 D Primary nursing
- 37 An example of functional nursing is
 A An RN coordinates a person's care from admission through discharge
 B Nursing tasks and procedures are delegated to nursing assistants
 C One nurse gives all treatments
 D Services are moved from departments to the bedside
- 38 When the number of people caring for each person is reduced, this nursing care pattern is
 A Functional nursing
 B Case management
 C Patient-focused care
 D Team nursing
- 39 Medicare
 A Is bought by individuals and families from an insurance company
 B Helps to pay medical costs for low income families
 C May be provided by an employer
 D Is a federal health insurance program for person 65 years or older
- 40 A system that limits the amounts paid by insurers, Medicare, and Medicaid by determining the amount paid before care is called
 A Prospective payment
 B Medicaid
 C Managed care
 D Group insurance
- 41 In a Preferred Provider Organization (PPO)
 A The patient may choose any doctor in the PPO
 B The focus is on preventing disease and maintaining health
 C The cost of services is paid by a prepaid fee
 D Doctors or hospitals may charge whatever is necessary

- 42 When a health care agency is accredited
- A It is voluntary and signals quality and excellence
 - B The agency is licensed by the state to operate and provide care
 - C It allows the agency to receive Medicare and Medicaid funds
 - D The agency meets standards set by the federal and state governments
- 43 If a deficiency is found during a survey of a health care agency, the agency
- A Usually is given 60 days to correct it
 - B Will be closed immediately
 - C Can decide whether or not to correct the deficiency
 - D Can sue the survey team

Matching

Match the type of health care agency with the service provided.

- | | |
|--|-----------------------------|
| 44 _____ Serves people who are dying | A Hospital |
| 45 _____ Provides complex care while the person recovers from illness or surgery before returning home _____ | B Rehabilitation agency |
| 46 _____ Provides services to persons who do not need hospital care but cannot care for themselves at home | C Long-term care center |
| 47 _____ Serves people of all ages for acute, chronic, or terminal illnesses | D Mental health center |
| 48 _____ Treats people who may have difficulty dealing with events in life | E Home care agency |
| 49 _____ Provides housing, personal care, and other services in a homelike setting | F Hospice |
| 50 _____ Serves people who do not need hospital care, but need complex equipment and care measures | G Skilled nursing facility |
| 51 _____ Provides care to persons at home | H Assisted living residence |

Fill in the Blanks

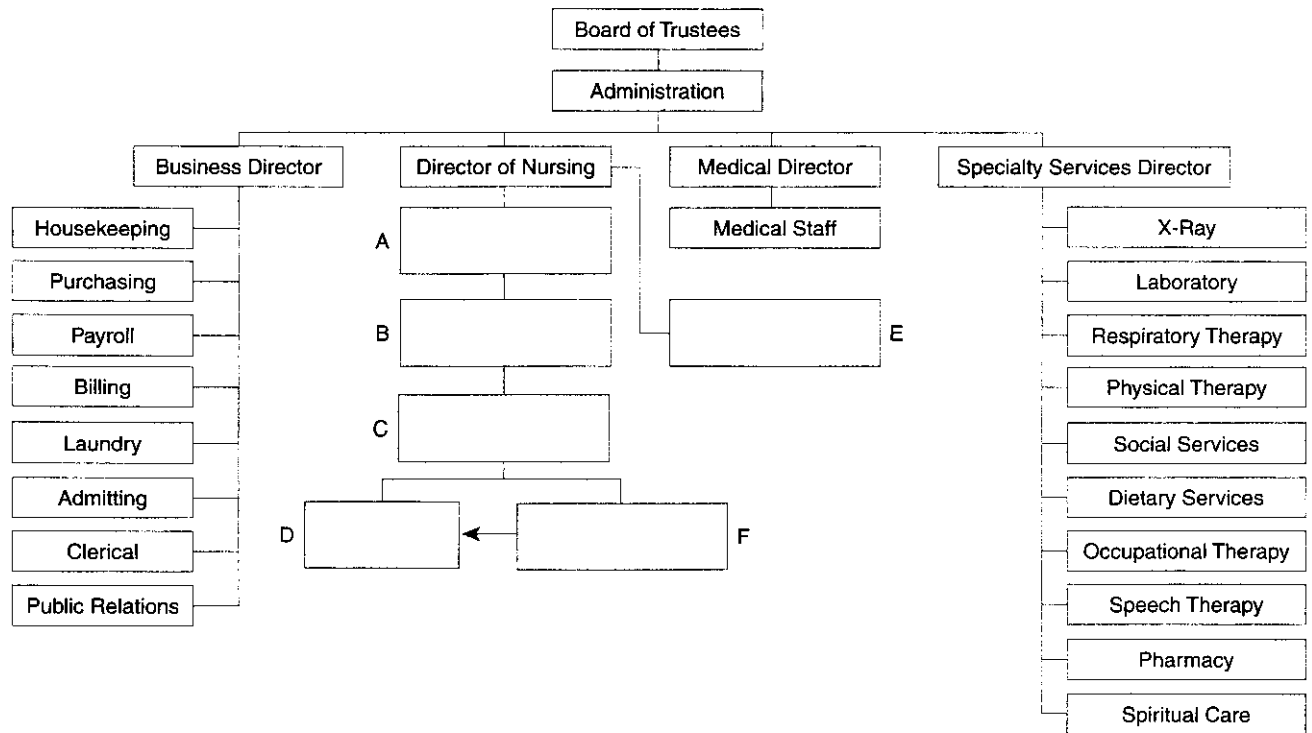
- 52 Write out the abbreviations
- A CMG _____
 - B DON _____
 - C DRG _____
 - D HHRG _____
 - E HMO _____
 - F LPN _____
 - G LVN _____
 - H NATCEP _____
 - I PPO _____
 - J RN _____
 - K RUG _____
 - L SNF _____
- 56 _____ Takes x-rays and processes film for viewing
- 57 _____ Gives respiratory treatments and therapies
- 58 _____ Assesses and plans for nutritional needs
- 59 _____ Assists persons with musculoskeletal problems
- 60 _____ Assists persons to learn or retain skills needed to perform activities of daily living
- 61 _____ Treats persons with speech, voice, hearing, communication, and swallowing disorders
- 62 _____ Assists persons with their spiritual needs
- 63 _____ Helps patients and families with social, emotional, and environmental issues affecting illness and recovery
- 64 _____ Tests hearing and prescribes hearing aids

For questions 53-64, write the name of the health team member described.

- 53 _____ Supervises LPN/LVNs and assistive personnel
- 54 _____ Diagnoses and treats diseases and injuries
- 55 _____ Collects samples and performs laboratory tests on blood, urine, and other body fluids and secretions

Labeling

For questions 65 and 66, use the following illustration.



- 65 Fill in members of nursing service on the organizational chart
- 66 The nursing assistant reports to two groups of nursing service. They are
A _____
B _____

Nursing Assistant Skills Video Exercise
View *Basic Principles* video to answer questions 67-69.

- 67 As a nursing assistant, you are a member of _____ that works together for the _____
- 68 _____ and _____ and _____ define the roles and functions of each team member.
- 69 Each member of the nursing team is concerned with _____ of patients, residents, and their families.

Optional Learning Exercises

For questions 70-81, name the member of the health team who provides the service described.

- 70 Mr. Williams needs assistance to regain skills to dress, shave, and feed himself (ADL). He is assisted by the _____
- 71 The nurse has concern about a drug action so he calls the _____

- 72 Mrs. Young needs the corns on her feet treated. The nurse notifies the _____
- 73 Ms. Stewart has the responsibility of doing physical examinations, health assessments, and health education for the center where she works. She is a _____
- 74 Mr. Gomez keeps turning up the volume of his TV. His hearing is tested by the _____
- 75 The _____ meets with a new resident and his family to discuss his nutritional needs.
- 76 Mr. Fox had a stroke and has weakness on his left side. The _____ assists him by developing a plan that focuses on restoring function and preventing disability from his illness.
- 77 The doctor orders x-rays after Mr. Jackson falls. The x-rays are done by the _____
- 78 Mr. Ling has chronic lung disease and needs respiratory treatments. These are given by the _____
- 79 Ms. Walker plans the recreational needs of a nursing center. She is an _____
- 80 After a stroke, Mr. Stubbs has difficulty swallowing. He is evaluated by the _____
- 81 When the doctor orders blood tests, the samples are collected by the _____

For questions 82-86, name the nursing care pattern described in the following examples.

- 82 Ms. Hines works with Dr. Hogan. When his patient, Harry Forbes, is admitted to the hospital, Ms. Hines coordinates his care from admission to discharge. She also communicates with the insurance company and community agencies involved in Mr. Forbes' care. This is an example of _____
- 83 When Mr. Holcomb reports for work as a nursing assistant, he is assigned to make all the beds on the unit. The RN gives all the drugs, and the LPN gives all the treatments. This nursing care pattern is _____
- 84 Ms. Conroy works on the same nursing unit each day. She has a group of patients and she gives total care to each of them. She teaches and counsels the person and family, and plans for home care or long-term care when needed. This is an example of _____
- 85 Ms. Ryan is a nursing assistant. She gives care that is delegated by an RN. The RN leads a team of nursing staff members and she decides the amount and kind of care each person needs. This is called _____
- 86 Mrs. Young receives her care and physical therapy on the nursing unit. She does not have to go to different departments to receive treatments and care. This care is provided by the nursing team instead of by other health team members. This is called _____

Independent Learning Activities

Gather the following information about health care agencies in your area.

- How many hospitals are located in your area? Choose one hospital and answer the following questions.
 - What services are provided by this hospital?
 - How many beds are available for patients?
 - How many staff members work there?
 - How many staff members are: RNs? LPNs? Nursing assistants?
 - What care is provided by nursing assistants?
 - Does the hospital have a skilled nursing facility? What types of patients are admitted to this unit?
 - Does the hospital have a rehabilitation or subacute unit? What care is provided on this unit?
 - What services are provided for a person who needs care at home after discharge?
- How many long-term nursing centers are located in your area? Choose one center and answer the following questions.
 - What types of residents are accepted in the center? (For example, does the center consider level of care needed, the resident's disease, or method of payment?)
 - What rehabilitation services are given?
 - How many residents live in the center?
 - How many staff members work there?
 - How many staff members are: RNs? LPNs? Nursing assistants?
 - What care is provided by nursing assistants?
- How many nursing centers in your area provide skilled nursing care? Choose one center and answer these questions.
 - How many residents live in the center?
 - How many staff members work there?
 - How many staff members are: RNs? LPNs? Nursing assistants?
 - What care is provided by nursing assistants?
- How many assisted living facilities are located in your area? Choose one center and answer the following questions.
 - Is this facility independent or part of a long-term care center?
 - How many residents live in the facility?
 - What kind of living quarters do the residents have? (For example, does each resident have an apartment or studio? Do they share kitchen facilities or does each person have a kitchen?)
 - How many staff members work there?
 - How many staff members are: RNs? LPNs? Nursing assistants?
 - What care is provided by nursing assistants?
- What agency provides care for persons with mental illnesses?
 - What type of care is provided?
- Does your area have a hospice program? If so, answer the following questions about the program.
 - Is this program located within a center or does it provide care in the person's facility?
 - What type of care is provided?
 - What special training is given to the staff? What duties can be performed by a nursing assistant?